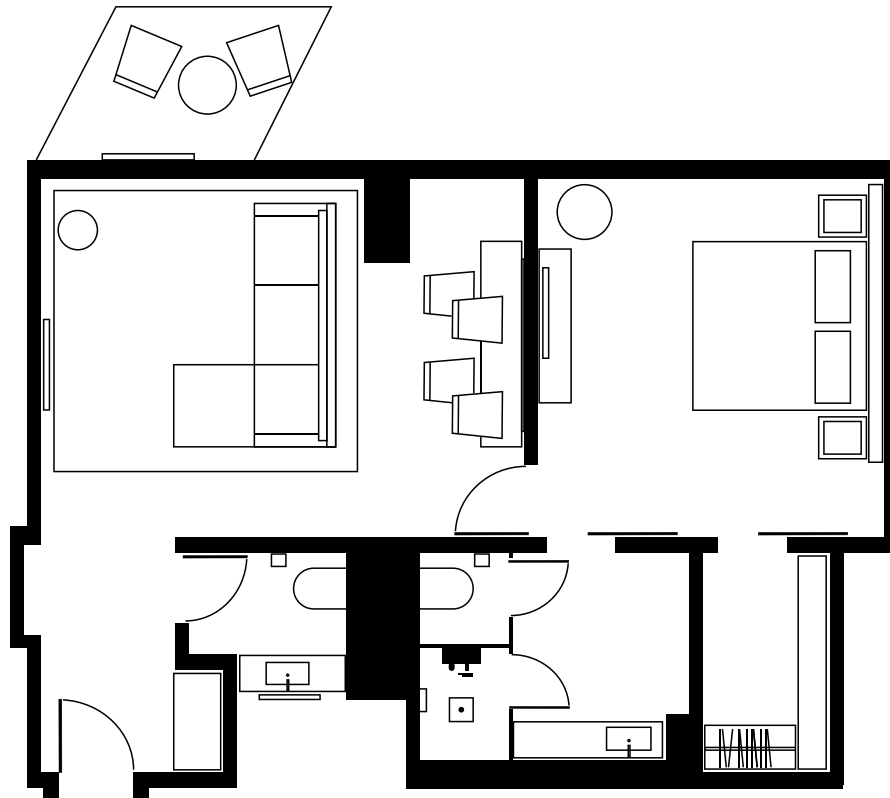


EAST MIAMI ONE BEDROOM SUITE




east



Please note actual room layout may vary.

Work and play in our sunny One Bedroom Suites. Each suite offers an oversized living area decorated with playful artwork, spa-inspired bathrooms and two 55" smart TVs. All the thoughtful touches you need for an invigorating and inspirational stay. Located on the 36th floor, you'll enjoy dazzling views and a roomy balcony where you can make the most of Miami's year-round tropical climate.

ROOM DETAILS

 ROOM SIZE	640 - 750 sq ft / 60 - 70 sqm
 VIEW	Urban and Bay Views
 BEDS	King

ROOM FEATURES

King size bed	Hair-dryer
Comfortable down bedding	Iron and ironing board
Walk-in rain shower	In-room safe
Complimentary WiFi	55" smart TV
Complimentary coffee	Room service
Filtered drinking water dispenser	Multi-scene lighting
Mini bar	Blackout blinds with sheer curtains