




Please note actual room layout may vary.

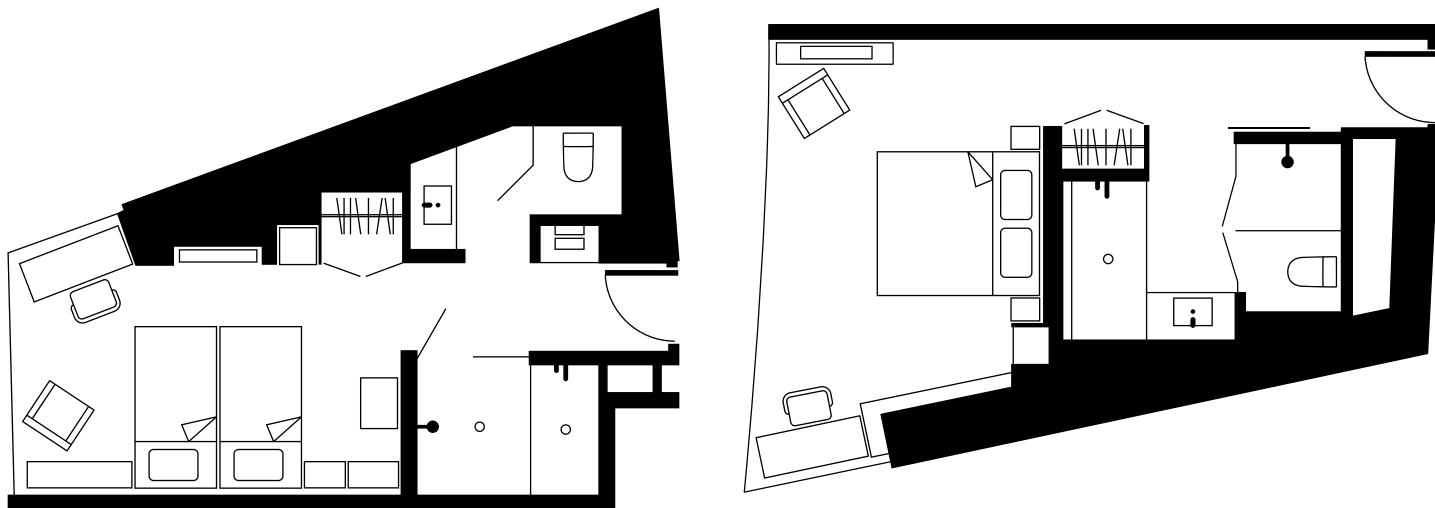
You'll feel like you're floating above the city in our Urban Corner View rooms with floor-to-ceiling windows and panoramic views of Beijing. Every room comes with a lush walk-in rainfall shower, big, bubbly bathtub and a comfy king size bed. The perfect recipe for relaxation. There are also international power sockets, a desk and WiFi - everything you need to work playfully from the comfort of your room.

ROOM DETAILS

 ROOM SIZE	370 sq ft / 35 sqm
 VIEW	Urban or EAST View
 BEDS	King or Twin

ROOM FEATURES

King or twin size bed	Hair-dryer
Comfortable down bedding	Iron and ironing board
Walk-in rainfall shower	Safety box
Bathroom amenities by SOAK	Flat screen TV
Bose mini speaker	Room service
Complimentary WiFi and wired broadband internet access	Multi-scene lighting
Complimentary coffee and tea	Hardwood floors
	Blackout blinds with sheer curtains



实际房间布局可能有所变化

隔着城市精选客房的落地大玻璃窗，细心欣赏北京的热闹城市景象。宽敞的房间同时配有特大双人床、雨淋花洒设备和浴缸。配置充足的空间同时设有书桌、国际适用充电插座和无线网络让你随时投入工作。

房间信息

📏 房间大小	320 平方英尺 / 30 平方米
🌃 景观	城市或东隅景观
🛏 床数	大床 或 双床

房间设施

双人大床或双床	吹风机
舒适羽绒寝具	电熨斗及熨衣板
步入式雨淋花洒	保险箱
SOAK品牌浴室用品	平板电视
Bose 迷你扬声器	客房送餐服务
免费 WiFi 及有线宽频网络	多场景灯光控制
免费咖啡及茶品	实木地板
	遮光窗帘及窗纱