

Please note actual room layout may vary.

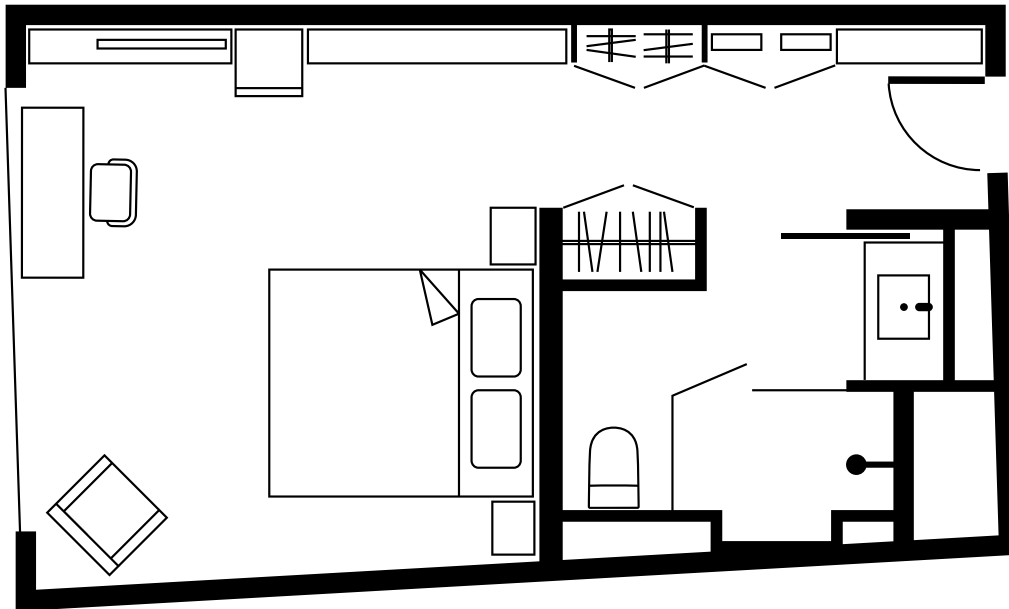
With scenic park views, the floor-to-ceiling windows in our EAST Rooms allow sunlight and positivity to flow in – ensuring you wake up fresh and energised. Each room comes with an indulgent walk-in rainfall shower, an ultra-comfortable king size bed and a flat screen TV. With international power sockets, WiFi and desk space – you can stay connected and productive throughout your stay.

ROOM DETAILS

 ROOM SIZE	320 sq ft / 30 sqm
 VIEW	EAST View
 BEDS	King

ROOM FEATURES

King size bed	Hair-dryer
Comfortable down bedding	Iron and ironing board
Walk-in rainfall shower	Safety box
Bathroom amenities by SOAK	Flat screen TV
Bose mini speaker	Room service
Complimentary WiFi and wired broadband internet access	Multi-scene lighting
Complimentary coffee and tea	Hardwood floors
	Blackout blinds with sheer curtains



实际房间布局可能有所变化

隔着东隅客房的落地大玻璃窗，让阳光和朝气注满室内。宽大的房间配备特大双人床和雨淋花洒间，让你保持活力。配置充足的空间同时设有书桌、国际适用充电插座和无线网络让你随时投入工作。

房间信息

📏 房间大小	320 平方英尺 / 30 平方米
🌄 景观	东隅景观
🛏 床数	大床

房间设施

双人大床	吹风机
舒适羽绒寝具	电熨斗及熨衣板
步入式雨淋花洒	保险箱
SOAK品牌浴室用品	平板电视
Bose 迷你扬声器	客房送餐服务
免费 WiFi 及有线宽频网络	多场景灯光控制
免费咖啡及茶品	实木地板
	遮光窗帘及窗纱