




Please note actual room layout may vary.

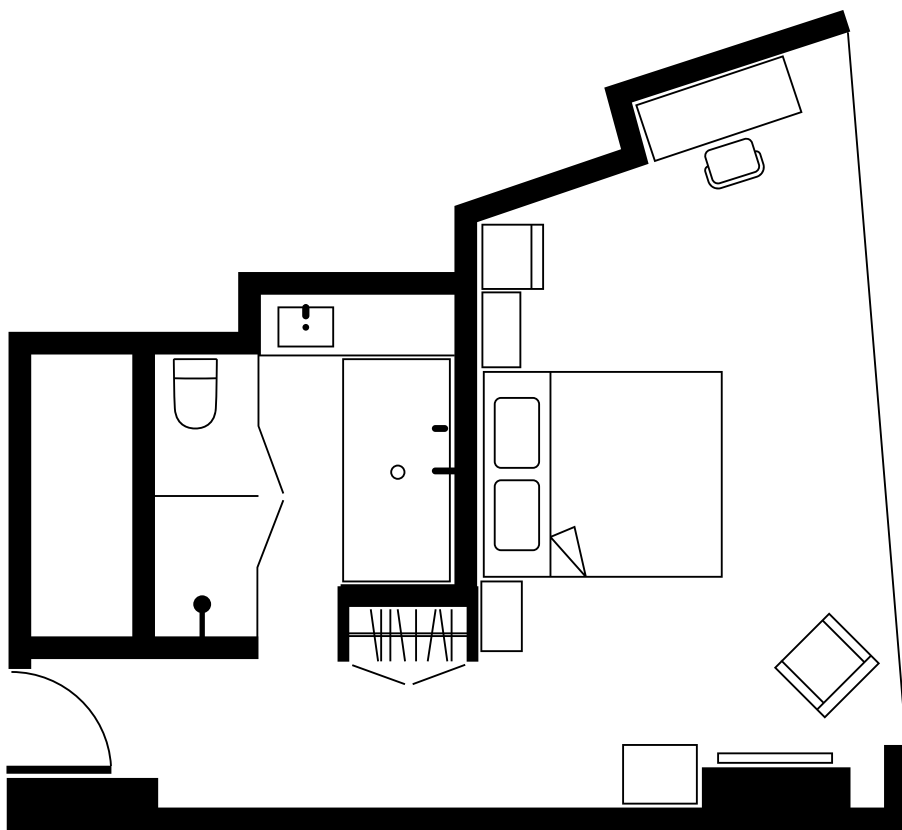
Our nice and spacious EAST Corner rooms have gorgeous park views and all the features you need to work, play and relax. Pamper yourself with a lush walk-in rainfall shower, roomy bathtub and spa-inspired products by Australian skin and haircare brand Appelles. The king size bed is perfect for naps and refreshing nights of sleep while a stylish desk, international power sockets, WiFi and Nespresso machine mean it's easy to re-energise and get back to business.

ROOM DETAILS

 ROOM SIZE	370 sq ft / 35 sqm
 VIEW	EAST View
 BEDS	King

ROOM FEATURES

King size bed	Hair-dryer
Comfortable down bedding	Iron and ironing board
Walk-in rainfall shower	Safety box
Bathroom amenities by SOAK	Flat screen TV
Bose mini speaker	Room service
Complimentary WiFi and wired broadband internet access	Multi-scene lighting
Complimentary coffee and tea	Hardwood floors
	Blackout blinds with sheer curtains



实际房间布局可能有所变化

从充满阳光的东隅精选客房俯瞰北京城市景致,我们已为你准备一切所需,在这里寓工作于娱乐、寓娱乐于工作。每间客房均设有雨淋花洒设备、大浴缸和由澳洲护肤及头发护理品牌SOAK供应的浴室用品。时尚书桌、国际适用充电插座和无线网络让你随时投入工作,启发灵感。你亦可在特大双人床休息充电,让我们为你打点一切。

房间信息

📏 房间大小	320 平方英尺 / 30 平方米
🌄 景观	东隅景观
🛏 床数	大床

房间设施

双人大床	吹风机
舒适羽绒寝具	电熨斗及熨衣板
步入式雨淋花洒	保险箱
SOAK品牌浴室用品	平板电视
Bose 迷你扬声器	客房送餐服务
免费 WiFi 及有线宽频网络	多场景灯光控制
免费咖啡及茶品	实木地板
	遮光窗帘及窗纱