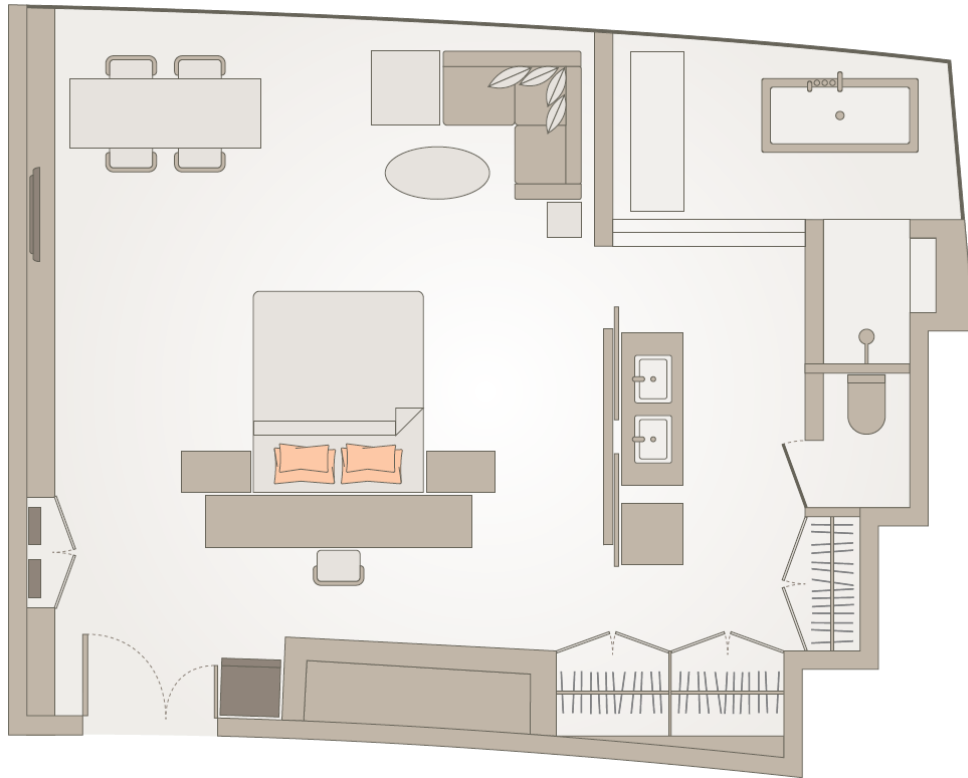


# east

东隅 BEIJING

## EAST Studio with Kitchenette

(750 sq ft / 70 sqm)



### Guest Rooms and Suites

The 24/F and 25/F are our executive floors or what we call our EAST Studios. VIP arrival and departure services as well as all the familiar facilities are provided on these floors including king-sized beds, bathroom amenities by Australian-designed skin and hair care brand, Appelles®, complimentary Wi-Fi, iPod touch and audio systems, and the Nespresso coffee machine. Most importantly, the rooms upstairs come with access to the Upstairs Lounge with even more benefits and amenities available for use such as iPads, a boardroom, a 60-inch touchscreen display and a dedicated Guest Experience team to cater to your needs.

### Room Features

- + Access to the Upstairs Lounge
- + King-sized or twin beds
- + Comfortable down bedding
- + Walk-in rainfall shower and bathtub
- + Bathroom amenities by Appelles®
- + iPod dock and audio docking system
- + Complimentary Wi-Fi and wired broadband internet access
- + Nespresso coffee machine and tea
- + Hair-dryer
- + Iron and ironing board
- + Safety box
- + Flat screen TV
- + 24-hour room service
- + Multi-scene lighting
- + Hardwood floors
- + Blackout blinds with sheer curtains

### EAST, Beijing 北京东隅

No. 22 Jiuxianqiao Road,  
Chaoyang District, Beijing, 100016  
北京市朝阳区酒仙桥路22号

T +8610 8426 0888  
www.east-beijing.com